



# Permeable Resin Bound Paving Solutions



**SureSet**   
Permeable Paving

*'Bound with excellence since 1997'*



## ABOUT SURESET

SureSet, specialising exclusively in resin bound surfacing materials, have been supplying high quality permeable paving for both Commercial and Residential projects since 1997. With the support of our own Installation Team and network of Nationwide and Global Partners your project can be installed anywhere in the world.

Our resin bound paving solutions offer natural and recycled materials, unlimited colours, and a design flexibility no other type of paving can match.

Keep up to date with the latest news from SureSet via our Blog and signing up to our Newsletter by visiting our website.



### SureSet UK Ltd

32 Deverill Road Trading Estate  
Sutton Veny  
Warminster  
Wiltshire  
BA12 7BZ

**T: +44 (0)1985 841180**  
E: [brochure@sureset.co.uk](mailto:brochure@sureset.co.uk)  
F: +44 (0)1985 841260  
[www.sureset.co.uk](http://www.sureset.co.uk)



## CONTENTS

Why SureSet?	- 4
Bound vs Blocks	- 5
Applications	- 6
Bases	- 7
Design	- 8
Specify	- 9
Installation	- 10
Services	- 11
Colour Range	- 12
Case Study - Residential	- 14
Application Insight - FlexiSet	- 15
Case Study - Residential	- 16
Application Insight - StepRise	- 17
Case Study - Commercial	- 18
Application Insight - InBound	- 19
21 Year Guarantee and Maintenance	- 20
Testimonials	- 21
Case Study - Global	- 22



## WHY SURESET?

We take pride in the fact we offer great customer service along with great products. From start to finish we can offer technical advice, full supply and installation and a 21 year guarantee to complete the service. Our resin bound paving solutions offer natural and recycled materials, unlimited colours, and a design flexibility no other type of paving can match. Unlike many traditional paving systems SureSet is permeable; this means that any proposal including SureSet demonstrates a sustainable approach to water management. As a market leader in permeable resin bound paving, we have the reputation, experience and innovative approach to make any design outstanding throughout the world.

- Durable
- Permeable
- Quick and easy to install
- Unlimited colours
- Flexible design capability
- Low maintenance
- Smooth, hardwearing finish
- Colour stable
- 21 year guarantee

### Smooth Finish with No Loose Stone

Seamless finish ideal for disabled access, children, pushchairs and bicycles.

### Permeable

The voids in SureSet permeable paving allow water to pass straight through. This natural drainage eliminates puddles and contributes to flood prevention. The permeability of SureSet makes it fully SuDS (Sustainable urban Drainage Systems) compliant.

### Hardwearing

Long lasting surface for pedestrian and vehicular areas.

### UV Stable

Colour remains true in sunlight.

### Low Maintenance

Weed growth is minimal and the open voids eradicate any standing water. All you need to do is sweep and occasionally power wash your surface.

### Fast Installation

Approximately 250m<sup>2</sup> a day can be laid over many existing surfaces. We can arrange everything from start to finish, providing materials and installation.

### Design Flexibility

Single or multi-coloured curves, circles, patterns and numbers can be achieved just as easily as a straightforward installation.

### Unlimited Colour Range

For creative, innovative designs.

### Matching Reinstatement

Can be successfully patched and repaired with an identical formulation.

### Environmentally Friendly

The installation method is a low energy cold applied process. Thin layer depth (typically, 18mm)

minimises raw material consumption. Can remove the need for excavation and replacement of existing hard surfacing.

### 21 Year Guarantee

We can install our paving anywhere in the world and our installations are guaranteed for 21 years against:

- Loose stone
- Cracking
- Oil damage
- UV degradation
- Colour fade
- Frost damage
- Workmanship

### SuDS

SuDS is an approach to water management introduced by the Environment Agency.

The main principles of SuDS is to mimic natural drainage i.e. allow water to soak back into the ground. SureSet is one of 29 organisations including Defra and the Environment Agency supporting susdrain, an initiative that provides resources for anyone involved in delivering SuDS.





## BOUND vs BLOCKS

There are two distinct types of paving systems that are a popular surfacing choice but both have different methods and advantages. They are the resin bound system and the blocked paving system.

### RESIN BOUND (SureSet)

The popular paving choice known for its permeability, the stone is mixed with a clear resin on site so that each particle of stone is completely coated with the resin. Once the resin and aggregate are fully mixed together they are then applied to the base to give a permeable, smooth and durable finish.

When combined the finished depth of the bound system usually varies between 12mm and 24mm. The depth is dependent on the aggregate size in the mix and the application it is being used for. The resin bound system allows the mixing of different sizes and colours of aggregate to give a wide variety of appearances and textures.



### BLOCK PAVING (not supplied by SureSet)

A traditional method commonly used on driveways and patios. Block paving has a beautiful appearance and is laid directly onto sand with a well prepared sub base of crushed stone. It should be remembered that modular **block paving** is only pigmented blocks of concrete that will fade and lose their original aesthetics over a relatively brief period of time. Permeable concrete block paving are also available, the sand bedding layer is replaced by small size stones. Blocks come in various sizes and colours to offer a variety of styles suitable for many applications.

BOUND vs BLOCKS	BOUND	BLOCKS
Smooth Surface	✓	✗
Attractive	✓	✓
Permeable	✓	✓
Seamless	✓	✗
Longevity	✓	✓
Environmentally Friendly	✓	✗
Durable	✓	✓
Low Maintenance	✓	✗
Weed Growth	✗	✗



## APPLICATIONS

SureSet Permeable Paving is available in many varied materials and colours, which are suitable for all applications. We advise discussing each project and application with us individually but here is a guide to our recommended usages.

Size Applications	Natural Aggregates			Crushed Marble			Rounded Marble	Fusion			In-Bound	Spectrum	Recycled	
	3mm	6mm	10mm	3mm	6mm	10mm	10mm	3mm	6mm	10mm	3mm	3mm	3mm	6mm
Pathway	✓	✓	✓	✓	✓	✓	✓	✓	✓	✓		✓	✓	✓
Driveway	✓	✓	✓	✓	✓	✓	✓					✓		
Patio	✓	✓	✓	✓	✓	✓	✓	✓	✓	✓		✓		
Tree Pit		✓	✓		✓	✓	✓		✓	✓				
Pool Surround	✓	✓	✓	✓	✓	✓	✓	✓	✓	✓		✓		
Access Road	✓	✓	✓	✓	✓	✓								
Car Park	✓	✓	✓	✓	✓	✓								
Internal Use	✓			✓				✓			✓	✓		
Roof Dock	✓	✓	✓	✓	✓	✓	✓	✓	✓	✓		✓		
Steps	✓	✓	✓	✓	✓	✓	✓	✓	✓	✓		✓		
Bridges	✓	✓	✓	✓	✓	✓	✓					✓		
Ramps	✓	✓	✓	✓	✓	✓	✓	✓	✓	✓		✓		
Decorative	✓	✓	✓	✓	✓	✓	✓	✓	✓	✓		✓	✓	✓



## BASES FOR SURESET

### Asphalt (also known as Tarmac)

Is the ideal base for SureSet paving. Suitable for all traffic types (depending on build up). SureSet can be laid directly onto an existing asphalt surface or a newly installed one as soon as it has cooled. The asphalt should be installed onto an appropriate granular sub-base, of adequate depth to accept the expected weight of use.

### Concrete

Is an alternative base if asphalt is impractical. We advise that all concrete bases need to be primed and a crack reduction membrane (CRM) applied before SureSet is installed.

### Freshly-Laid Concrete

A minimum period of 7 days must be allowed before installation of SureSet onto new concrete. The surface should then be primed using a polymer based primer before SureSet is installed. Although SureSet is crack resistant, it will ultimately reflect any crack within the base. Movement joints must be included in the plans, and carried up through the SureSet paving where necessary. A sufficient depth and grade of concrete should be used to withstand the expected loadings in use.

### Existing Concrete

Needs to be structurally sound and thoroughly cleaned before primed using a polymer based primer before SureSet is installed.

### Crushed Rock

Is an ideal base for tree surrounds, and is suitable for areas of low pedestrian traffic with no vehicular access.

Requires to be built in two layers of 4/20 free draining crushed stone base, and well-compacted to a minimum depth of 100mm. SureSet needs to be laid to a minimum depth of 30mm to compensate for the weaker base.

### SureCell ®

Is a recycled plastic cellular grid structure suitable for pedestrian and light vehicular areas (sub-base dependent). The cellular structure when interlocked and filled with compacted crushed aggregate creates a permeable and load bearing base-course.

When filled the SureCell has a compressive strength of 400t/m<sup>2</sup>.

As with all groundworks, local, specialist advice must be taken on the sub base requirements for each scheme.

**If you have any questions about laying onto new and existing surfaces, contact SureSet on 01985 841 180**



## DESIGN

Our wide range of colours and textures allows SureSet to blend in with surrounding materials or provide a striking contrast, depending on the creative vision of the designer.

Resin bound paving has proved to be the perfect design solution for an extensive range of projects across the world.

From **schools**, medical centres, **bridges** and hospitals to **private homes** and pedestrian areas, SureSet has brought to life designs of all shapes, sizes and complexities.

We offer solutions for both **exterior** and **interior** applications – allowing designers to continue their design theme from the outside through to the inside of a building.

There is an optional clear coat finish to use internally which provides a smoother finish for easy maintenance.

Our product also provides designers the opportunity to create **intricate** and detailed **designs** using stencils or metal edging within the surface.

Whether it is a corporate **logo**, a welcome message to visitors or a school emblem, SureSet can be used to create a perfect, **colour-matched** representation of virtually any subject. Providing a unique design signature to any project.

Our highly skilled team of Installers efficiently complete the project with focus on accuracy and attention to detail.

The result is an extremely **durable** and highly **attractive** solution which will keep its colour and good looks for many years to come.

Add the ultimate **'WOW'** factor to your paving!

**Contact us with your design. We will then work closely with you to ensure the right solution is achieved.**





## SPECIFYING SURESET

If you would like SureSet to provide you with a quotation we will need to know the

- Area size of the area in square meters (m<sup>2</sup>).
- Application type of use.
- Colour or aggregate you require.

### THE PROCESS TO SPECIFY

A SureSet resin bound surface consists of:

- Aggregate  
Natural gravels, crushed rock, marble or recycled materials.
- Crystal clear resin binder  
Which is UV stable and flexible.

SureSet resin bound paving is a cold laid process.

The resin bound aggregate is mixed together to ensure each particle is fully coated in resin, allowing it to bind together when laid.

### TO SPECIFY THE EXACT SURESET BLEND AND DEPTH OF MATERIAL

- Product code  
e.g. L1813/02
- Description  
Nominal size, colour and texture (crushed / rounded) e.g. 6mm Sterling.

- Depth of laying  
e.g. 18mm (dependent on application type).

### Which can be found

Code and descriptions are labelled on the bottom of each sample disc.

Recommended depths of laying are on SureSet specifications.

### How To Measure Your Area

For a square or rectangle, measure the length and width of the area in metres and multiply them together to give you the total number of square metres

For advice on measuring other shapes, please visit our website or call us on +44 (0)1985 841180.





## INSTALLATION

Your SureSet permeable resin bound paving installation will be carried out either by our in-house Installation Team or one of our fully trained Approved Installers.

Our Operations Team will handle all the arrangements for your installation; supporting you through the process and doing everything they can to make it as easy as possible for you.

### CURING TIME

- Needs a curing time of between six to eight hours for pedestrian traffic applications, and 12-16 hours for vehicular traffic (weather dependent).
- Can be laid in temperatures as low as 0°C.
- Can be laid over existing surfaces.

### DURING AND AFTER INSTALLATION

Our Installers will work tidily and with respect to you and neighbouring properties. All adjacent areas will be protected during the installation to minimise the risk of resin contamination. They will clear up behind themselves and take away any rubbish.

**With our large network of Approved Installers and Global Partners, we can install a SureSet surface worldwide.**

All Approved Installers have

- Invested in our training programme
- Skills and experience
- Fulfilled our stringent criteria
- A SureSet Certification

If you have a project you wish to self install using our TradePacks or DIY Kits, please visit our Online shop [www.suresetshop.com](http://www.suresetshop.com)



## SERVICES

### Installation (supply and Install)

Both nationwide and globally, we offer a full installation service. Your SureSet installation will be carried out either by our Installation Team, one of our Approved Installers or one of our Global Partners. All installations are backed by our 21 year Guarantee.

### Self install (supply only)

We understand that experienced tradesmen, builders and DIY enthusiasts may not require our installation services and we have developed a variety of self-install options - drawing on the benefits of our resin bound technology and made available to purchase through our online shop.

### Cleaning

We have a full maintenance guide available to download from our website, we also offer a resin bound cleaning service. If you would like to find out more about this, please contact us.

### Approved Installer scheme

Supporting our highly skilled Installation Team is a network of SureSet Approved Installers, who complete projects worldwide with our Global Partners who work internationally.

### CPD presentations

We offer resin bound CPD presentations covering the manufacturing, mixing and application processes and maintenance.

### Samples

SureSet offer a free sample delivery service, samples can be requested via the website or by contacting the Marketing Team.



## CASE STUDY

**SureSet Recreates the Seasons for Priors Court School**  
Creative resin bound installation for school supporting young people with severe autism

### Background

Set in a beautiful 50 acre site in Hermitage, Berkshire, Priors Court School was acquired and funded with a £15m donation from The Shirley Foundation in 1998. The original Grade II\* listed Queen Anne House was refurbished with purpose-built classrooms and accommodation, with the first pupils arriving in 1999; Priors Court School was officially opened by the Princess Royal on 23 May 2000.

The school is a registered not for profit charity providing education, accommodation and training for young people aged 5-25 who are severely affected by autism.

Due to their facilities and skilled staff, over the years, the demand for places at Priors Court continually increases.

### Solution

Priors Court School embarked on an expansion project to enable them to support an additional 13 young people severely affected by autism. This carefully considered project includes a communal hub to increase opportunities for socialising and vocational skills and a purpose-built gym and reception area which is run by young people to encourage life skills and provide work experience.

Priors Court School named their new facilities after the seasons Spring, Summer, Autumn and Winter

and was designed to directly address the sensory needs of pupils.

The project included a private garden for pupils that provided visual stimulation and cues.

We were contacted at the beginning of 2017 by MCS Construction Ltd and once the needs of the project were awarded, we began what we called 'The Lemon Tree' project.

Our Approved Installer Spadeoak installed a permeable asphalt base prior to us laying SureSet resin bound paving.

Over two and half weeks our skilled installers were on site, and with nine bespoke stencils and using 11 colours from our Spectrum range, one colour from our Natural Aggregate range and one colour from our Fusion range, created boats, leaves and other designs, all representing the four different seasons in the private garden.

### Result

The private garden is sectioned into Spring, Summer, Autumn and Winter after which the new facilities are named.

The seasons are emphasised with SureSet creative paving, with the amazingly vibrant colours fulfilling the brief by providing perfect visual stimulation and cues for pupils.



## NATURAL AGGREGATES



Apollo



Barley Butter



Blue Granite



Bronze



Butterscotch



Cappuccino



Chesnut



Milk Chocolate



Norwegian Bronze



Norwegian Pearl



Sterling



Sterling Midnight



Tuscan Barley Butter



Tuscan Terracotta

## CRUSHED MARBLE



Astro Peake



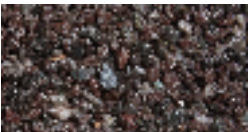
Buttermilk



Cocoa



Forest Green



Mulberry



Popcorn



Rose Petal



Safari



Sage



Sterling Forest



Winter Frost

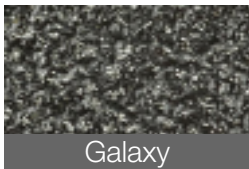
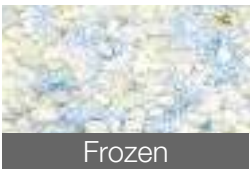
## ROUNDED MARBLE



## FUSION<sup>®</sup>



## INBOUND<sup>®</sup>



# SPECTRUM® RECYCLED GLASS RANGE



Aqua Blue



Bottle Green



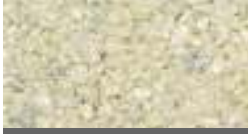
Bright Orange



Candy Pink



Chalk



Chalk White



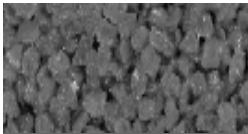
Clay Brown



Daffodil Yellow



Emerald Green



Gunmetal Grey



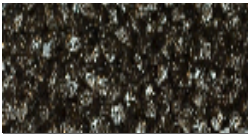
Lemon Yellow



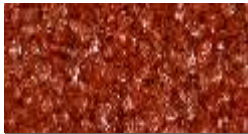
Luminous Yellow



Mint Green



Traffic Black



Red Oxide



Sky Blue



Traffic Red



Ultramarine Blue



Ultraviolet



Water Blue

See something you like?  
Other colours available upon request at  
[www.sureset.co.uk](http://www.sureset.co.uk)



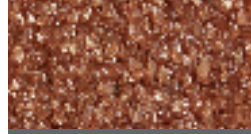
## GLITTER AND PEARLESCENT



Crushed Ice



Titanium



Bronze Medal



Silver Medal

## PASTEL



Blueberry



Candyfloss



Lavender



Sherbert

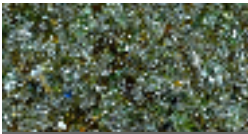


Spearmint



Peach

## RECYCLED MATERIALS



Bottle Glass



FlexiSet Bronze



FlexiSet Winter



FlexiSet Midnight



Mirror



FlexiSet Norwegian



Shells



FlexiSet Sterling





## APPLICATION INSIGHT TREE PITS

### Resin Bound Tree Pits

Tree pits are often an easy target for casually discarded litter, requiring disproportionate time and effort to keep these areas in pristine condition.

Our permeable resin bound tree pits need little maintenance, enhance the environment, eliminate the need for unsightly and costly metal grilles and are much less likely to be vandalised.

The unique resin bound structure maximises the voids between aggregate particles, allowing air flow and water penetration whilst remaining tough and durable yet with enough flexibility to allow for growth.

### SuDS Compliant

SureSet is fully SuDS compliant and therefore is often the first choice for Councils as a tree pit solution. Our permeable surfacing allows water to return to the natural water table. With issues surrounding flooding and pollution, a permeable surface is becoming essential.

### Non Harmful to Plants

All SureSet products cure as an inert material, meaning that they are environmentally friendly and of no danger to plants.

PH values will remain unchanged by SureSet and our tree surrounds can often act as a filter layer protecting the underlying soil from contaminants.

### Heat Reflective

SureSet can be heat reflective and its voided structure allows for the absorption and evaporation of moisture combating the Heat Island effect.



## CASE STUDY

### SURESET FOR FORMER BRICK COMPANY IN KENT

Resin bound surfacing laid at Hammill Park

#### Background

On the site of Woodnesborough Colliery, the Hammill Brick Company was formed in 1926 and at its peak was producing 180,000 bricks a week!

Due to a slowdown in the building industry, Hammill Brickworks closed in 2008.

In 2011 a proposal was submitted by Quinn Estates and Hammill Properties to develop the site for both commercial and residential use.

Six years later, and part of a wider regeneration project to transform the former Hammill Brickworks into one of the most desirable developments in Kent; permission was granted for 19 self-build homes and 24 light industrial units.

With 19 plots, this is one of the largest self-build developments in the county and they were all very quickly reserved.

We were contacted by Aylesham-based, Datum Groundworks Ltd with regards to installing a resin bound driveway to one of the self-build properties.

#### Solution

As with all self-build projects the environmental considerations of all materials used are high on the agenda – making SureSet permeable paving the perfect surface choice.

When SureSet resin bound paving is laid minute voids are formed that, when cured, mimic natural drainage by allowing water to pass through to the sub-base. Our skilled Installers were on site to

install a beautiful 290m<sup>2</sup> driveway in Barley Beach natural aggregate to this brand new self-build.

#### Result

This magnificent looking driveway provides the look of a sweeping stone driveway without the inconvenience of loose stone.

The permeability of SureSet resin bound paving allows for the efficient dispersal of water which brings a wide range of safety, comfort and maintenance benefits including:

- Reducing puddles
- Preventing weed growth
- Contributing to flood prevention
- Minimising the potential for flash flooding
- Reducing water pollution caused by oils and heavy metals.

#### Key Features:

- Application: Driveway
- Area: 290m<sup>2</sup>
- Base: asphalt
- Colour: Barley Beach
- Depth: 18mm
- Edges: setts
- Installed: January 2018



## APPLICATION INSIGHT

### FlexiSet

FlexiSet offers a rustic natural finish for any resin bound surface.

Made from 50% recycled rubber, 50% 6mm natural aggregate and our unique resin formula, FlexiSet delivers all the usual environmental benefits associated with SureSet.

The unpolished look and inherent flexibility of FlexiSet makes it ideal for:

- Woodland trails
- Jogging paths
- Pedestrian areas
- Cycle tracks
- Equestrian centres
- Drainage channels
- Golf courses
- Roof gardens
- Tree pits
- Boat decks.

*Please note that FlexiSet is suitable for pedestrian use only.*

#### Why choose FlexiSet?

- It's economical
- It's environmentally friendly
- It's lightweight
- It's flexible
- It's permeable

Suitable bases include concrete, asphalt, well-compacted stone and SureCell.

Made from shredded bus and truck tyres, the recycled rubber itself is black, but by adding natural aggregate to the mix we can bring colour to the surface.

See our full range of colours on our website.



## CASE STUDY

### RESIN BOUND PATIO FOR RETURNING KENT CUSTOMER

*Our skilled installers completed the resin bound paving using a SureCell base which creates a perfect permeable surface – not just looking good, but doing good too!*

#### Background

Sandwich meaning “market town on sandy soil”, a customer in the beautiful Sandwich Bay area of Kent contacted us for a second SureSet installation.

In 2016, we installed a stunning 205m<sup>2</sup> driveway in 6mm Almond.

In 2017, our client enquired about a pathway/patio project at the rear of their house using the same colour Almond. Unfortunately, this was no longer available\* but we were delighted to be able to offer a near perfect alternative with our Buttermilk.

*\*This occasionally happens with our Natural Aggregates and Marbles because of naturally occurring changes in the aggregate and marble.*

#### Solution

The owner of this beautiful property requested the name of their house be included within the pathway in a contrasting grey.

Using stencils the name of the house - Villa Oliva, and an olive tree were created in 3mm [Gunmetal Grey](#) and 3mm [Buttermilk](#) at our Wiltshire headquarters and installed the day before the pathway / patio was laid. Prior to installation our client's contractor laid

our grid structure sub-base [SureCell®](#) ready for SureSet resin bound paving.

#### Result

Installed by our Approved Installer, Resinators, SureSet resin bound paving and SureCell creates a perfect permeable surface – not just looking good, but doing good too!

The choice of Buttermilk and Gunmetal Grey used for this project impeccably compliments the grey setts that SureSet is laid up to.

The beauty of this stunning property is further enhanced with the addition of SureSet permeable paving...

#### Key Features:

- Application: Patio, creative paving
- Area: 150m<sup>2</sup>
- Base: SureCell®
- Colour: Buttermilk, Gunmetal Grey
- Depth: 24mm
- Edges: Grey setts
- Installed: October 2017





## APPLICATION INSIGHT

### StepRise

StepRise, is the answer to installing resin bound paving vertically to deliver a complete step solution.

The StepRise is available in three formats: standard, standard cut to size and custom. They are also available as Supply Only or Supply and Installation.

#### Standard StepRise

Size: 1200mm x 200mm x 12.5mm  
Mix type: General use  
Stone size: 3mm

#### Standard StepRise cut to size

Details as above but cut to your required size - a maximum two straight cuts with additional cuts available on request.

#### Custom StepRise

Size: Max 1200mm x 600mm x 12.5mm  
Mix type: General use  
Stone size: 3mm

Our standard and custom StepRise are available in the following colour options:

- 3mm Natural Aggregate
- 3mm Crushed Aggregate
- 3mm Marble
- 3mm Spectrum®

#### Additional information:

The lead time for StepRise is approximately 2 - 3 weeks (depending on colour and amount ordered).

We also supply Step Nosing (1.2m), end caps and mastic tubes. SureSet StepRise is available in Supply Only and Supply and install options.



## CASE STUDY

### ROYAL HOLLOWAY UNIVERSITY

#### Intro

Royal Holloway University is one of the largest colleges in the University of London; serving around 9,000 undergraduate and postgraduate students. It was officially opened by Queen Victoria in 1886 and remained an all-women college until 1945.

In 2015 work started on The Founder's Building to construct a new Library and Student Services Centre which is due to open in autumn 2017. The new building will be named after one of Britain's most famous suffragettes, and Royal Holloway alumna, Emily Wilding Davison.

#### Challenge

The Founder's Building was the original building of Royal Holloway College and its "Harry Potter" type Gothic architecture that was modelled on an elaborate red-brick building - the Château de Chambord, France.

We were contacted by our Approved Installer Spadeoak who were contracted to install the resin bound aspect of the Founder's Library project. The project included steps, footpaths and wall seats totalling 2,100m<sup>2</sup> around the new building.

The SureSet blends of Norwegian Pearl and Barley Beach natural aggregate were specified to complement the colours and style of the building.

#### Solution

Spadeoak's client is absolutely delighted with the completed installation which included the application of StepRises, the installation of seamless resin bound pathways and infilling bespoke metal trays with SureSet permeable paving and fixing them on top of a low wall to create a dry place for students to sit.

The neutral colours of Norwegian Pearl and Barley Beach sit sympathetically with the beauty of this distinctive Grade 1 listed building.

#### Key Features:

- Application: Pathway, steps, wall seats
- Area: 400m<sup>2</sup>, 1700m<sup>2</sup>
- Colour: Norwegian Pearl, Barley Beach
- Installed: July 2017
- Project: Supply Only



## APPLICATION INSIGHT

### InBound

SureSet Inbound is our internal resin bound flooring product and a great alternative to other hard flooring such as marble, laminate and tiles.

Using our extensive selection of colours and materials makes InBound perfect for a host of applications including showrooms, kitchens, offices, foyers, hallways, studios, reception areas, conservatories and corridors.

#### WHY CHOOSE INBOUND RESIN BOUND FLOORING?

- It is stylish and very durable
- It delivers a perfectly smooth, accessible finish
- It is extremely comfortable underfoot
- It is easy to clean
- It requires very little maintenance
- Our unlimited range of colours provide something for every taste or style
- Our extensive choice of textures
- The design flexibility

SureSet internal flooring is versatile and can be used in conjunction with underfloor heating as well

as lighting when placed underneath our recycled glass materials from our Spectrum® range, this creates a truly stunning glow beneath your desired colour.

There is an optional clear coat finish to provide an extra smooth finish for easy maintenance.

As with all SureSet installations, the InBound range is covered by our comprehensive 21 year guarantee.



## 21 YEAR GUARANTEE

SureSet is dedicated to providing the highest possible service with the highest quality product.

The design technology of our resin bound paving system gives us the confidence that, when installed in accordance with our quality standards, SureSet is a hard wearing durable surface which can withstand light pedestrian to vehicular access, easily coping with the stresses of power steering and heavy axle loads.

Our permeable resin bound paving installations are fully guaranteed for 21 years from the date of application against:

- Loose stone
- Cracking
- Oil damage
- UV degradation
- Colour change
- Frost damage
- Workmanship

The guarantee is conditional upon a suitable base being used, and the advice in the SureSet Aftercare and Maintenance Guide having been followed.

### Usage

SureSet surfaces are intended to be used by normal pedestrian or vehicular traffic for which they have been designed. Protection should be provided against abnormal usage.

### Routine Maintenance

Keep the SureSet surface regularly swept clean with a stiff broom and hose with clean water.

There is a full maintenance guide available to download from our website. SureSet also offer a professional cleaning service, please contact us to arrange this service.

### Washing

Washing can be carried out using a portable pressure washer to remove dirt, grime and moss.





## TESTIMONIALS

We thought you would like to know how the steps turned out. Easy to do, exactly as detailed in your paperwork. My steps face East and I am very pleased that despite the harsh winter weather they still look great and feel very good underfoot. One of the days during the freeze-up before Christmas when the road was ice bound there was no hint of any problems with adhesion of surface to steps.

**DIY Kit steps, South Belmont**

Totally professional service. I would not hesitate to use again.

**Nutbourne Construction Ltd**

Thanks for a good job, thanks to your fixers on site who were very helpful. SureSet did what it said on the tin and you were very professional.

**Oxford Road, Denham**

I would highly recommend SureSet. From my initial enquiry with the office staff through to the guys who undertook the final installation. All very professional which is hard to find these days.

**South Derbyshire District Council**

All the team at SureSet were very professional and helpful, we would definitely use SureSet again.

**The Grange, Wimbledon**

We have had it on our drive for 15 years, and it still looks good and performs very well.

**Homeowner, Peter Rendrick**

What comes through to me is a company that is determined to be of good and fair service with a real interest in the success of the customers project.

**TradePack Customer**

This is an excellent development, setting a very high standard for the accommodation of young people with autism and creating an outstanding environment for staff to provide their care.

**School Ofsted Inspector**

Your men are a credit to you, the work was finished to the highest of standards and the quality of the surface is first class, a credit to your company.

**Halley Primary School, Stepney**

We were very impressed with the finish. A very neat and tidy job giving a much better entrance to the front of the school.

**Nicola, Trainee QS/Contracts Administrator**

The Flight Area has had beautiful, bright, colourful pathways laid throughout, with leaf prints and animal foot prints incorporated into the design! We are delighted with the results and hope our visitors are too!

**The Butterfly Farm**



## CASE STUDY

### SAN GIUSTO CATHEDRAL, TRIESTE

San Giusto Cathedral paving in Trieste, Italy

#### Challenge

At the heart of the ancient Roman city of Trieste (original pre-Roman name – Tergeste) in Northern Italy, the main church is a Roman Catholic cathedral dedicated to Saint Justus. Standing on a hill of the same name, the architecturally impressive San Giusto Cathedral was built in the 1300's and is the seat of the Bishop of Trieste.

#### Solution

Our Italian Global Partner HiSkin contacted Jim Newton, our Global Sales Director following their visit to San Giusto. Outside the cathedral was a large pedestrian courtyard area laid in asphalt which needed replacement. HiSkin discussed using SureSet's permeable base option, SureCell and overlaying with their locally sourced aggregate 3mm Millefiori resin bound paving in order to complement the asymmetrical design and solid stone walls.

#### Result

Within a few months from first enquiry, San Giusto Cathedral is now as stunning externally as it is on the inside with its mosaic floor and Gothic rose window.

Not only does the colour of the resin bound paving seamlessly blend with the stone of the building, it provides a fully permeable build-up right through from the sub-base to the surface layer.

#### Testimonial from Customer:

*"I met HiSkin during the installation of the flooring SureSet to the hydro-dynamic plant and substation of Trieste, the work was installed by the team according to our expectations, the result obtained integrates perfectly with the surroundings."*

Marco Karel Huisman, DL for the work of arranging the external spaces of the museum pole of Trieste.

#### Key Features:

- Application: Pedestrian courtyard
- Area: 367m<sup>2</sup>
- Colour: 3mm Millefiori
- Depth: SureCell 52mm and SureSet 24mm
- Edges: Stone wall and setts
- Installed: June 2017

*For further information, to discuss a project or if you are interested in becoming a Global Partner  
Email the SureSet Global Sales Team at [globalsales@sureset.co.uk](mailto:globalsales@sureset.co.uk)*

## FREQUENTLY ASKED QUESTIONS

### **How much does a SureSet surface cost?**

Each project is priced individually depending on the location, size of area, application type and aggregate choice. Contact us with this information and we can provide a quotation for you.

### **Can heavy vehicles drive over SureSet?**

SureSet is suitable for use in car parks and access roads and can be driven on by lorries and maintenance vehicles.

### **Is the resin toxic?**

No. Once installed SureSet is an inert material.

### **How is it permeable?**

SureSet is carefully mixed to ensure each particle is well bound to its neighbour whilst allowing the maximum void space between them for drainage.

### **What depth is it normally laid at?**

The depth of SureSet will vary for each project, this depends on the type of application and the size of the aggregate used. Typically the depth of SureSet is approximately 18mm.

### **Can I lay it myself?**

DIY Kits and TradePack are available for smaller areas. We recommend using a SureSet Installation Team for larger projects.

### **How long does it take to cure?**

SureSet resin bound paving is suitable for use after six to eight hours for pedestrians and 12-16 hours for vehicles. For heavy vehicular use, we recommend 24 hours to ensure the surface is fully cured.

### **Is it easy to clean?**

Yes, SureSet is low maintenance. Regular sweeping and the occasional power washing is recommended to keep it looking fresh.

### **How long will it last?**

SureSet comes with a 21 Year Guarantee, however the resin technology suggests it will last in excess of 25 years.

### **Can I use the resin with aggregate I already have?**

In principle yes, although any aggregate would need to satisfy our minimum quality standard. If you would like to discuss this further, please contact us.